



RESEARCHING PEOPLE ORGANISATION

INTRODUCTION

If you are conducting a project which includes research methodologies involving working with people then you may wish to enrol on the VLE organisation 'Researching People'. It brings together resources to help you consider your research methods, and includes conducting interviews, observations, practice-based research and questionnaires/surveys.

The Researching People organisation is designed to be as generic as possible so that the information here is appropriate for students across the university. The organisation includes information on a number of areas key to the research process including, but not restricted to:

- Useful resources, including reading lists, software and external links
- Ways to develop a theoretical framework
- Tips on recruiting participants
- Choosing your research method
- Advice on health and safety issues
- Advice on ethical issues to consider
- Types of analysis
- Writing up your research.

Please note: Your first point of call during your research should always be your dissertation supervisor and you should ensure that you keep in contact with them throughout your research.



GAINING ACCESS TO THE ORGANISATION

In order to access the organisation please follow the instructions.

1. Follow this link: <https://tinyurl.com/y9o4fkof>
2. Log into Minerva with your university account name and password.
3. Click on the hyperlinked text 'Click here to enrol' (see Figure 1).
4. Click the green '+Enrol' text (see Figure 2).
5. Click 'submit' (see Figure 3).
6. You are now enrolled and have access to the Research People Organisation.
To find it, go to the 'Learn' tab, click on 'Organisations' (next to your modules) and then choose 'Researching People' (see Figure 4).

If you have any problems with self-enrolment please email m.j.prideaux@leeds.ac.uk.

Figure 1



Figure 2

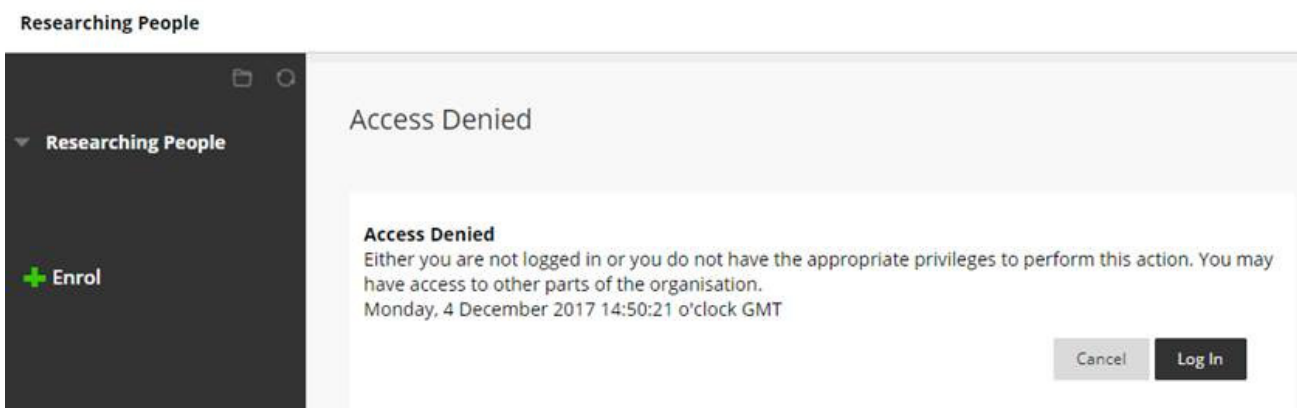


Figure 3

Researching People | Self Enrolment

Self Enrolment

ENROL IN ORGANISATION: RESEARCHING PEOPLE (ARTS00056)

Instructor: Melanie Prideaux, Jiani Liu

Description:

Categories: Education:Higher Education

*Click **Submit** to proceed. Click **Cancel** to go back.*

Figure 4